



PRESENTED BY

alexanders
Estate Agents

STEP INSIDE THIS BEAUTIFULLY PRESENTED, FOUR-BEDROOMED HOME



**JUST IMAGINE WAKING UP TO THE
SOUND OF WAVES, DRAWING BACK THE
CURTAINS AND ENJOYING A PANORAMIC
VIEW AS YOU TAKE YOUR FIRST SIP OF
COFFEE OF THE DAY, PURE BLISS.**

Sŵn-y-Môr is a home which gives you all that and so much more.

Sŵn-y-Môr can be found in an elevated position overlooking Barry and the much feted Knap; this spacious, four-bedroomed home is perfect for a growing family.

Dressed in an elegant, classic, New England style, the name of the property Sŵn-y-Môr, which means 'Sound of the Sea' in Welsh, lends itself perfectly to this truly beautiful property as it looks down towards the sea.

When you move throughout the property, the light and flowing energy makes itself felt immediately, as each room has its own view and its own story to tell. If you wish to unwind with a glass of wine at the end of the day, you could linger on the patio and soak up the last rays of the sun. A perfect end to the day.

As you enter the driveway to Sŵn-y-Môr, you will immediately be drawn to the stunning views. Pause a while, take a breath, and take a long look at the semi-detached home which was built in the 1930's and you will be able to visualise the expanse of space on offer. It was one of the key qualities which attracted the current owner, Faye, to the house.

She says, "When I came to see it almost 14 years ago, I had to have the vision to see how beautiful it could be made. It was owned by an elderly lady and looking very dated at the time".

"IT WAS THE VIEW THAT SOLD IT"

"I knew how I could beautifully transform this house. Of course, I was aware that there was a substantial amount of work required to be carried out to the property, but it was the view which kept me hooked! I just had to become its owner". In June 2004, Faye moved in.

"It's a very lucky house" Faye says. "A friend of mine is a Feng Shui practitioner, and she helped me re-organise the space to maximise that luck!"



A HOME WAS BORN.

The house comes with so many "pluses"; it is within close and easy walking distance of Romilly Park, The Knap, and Barry Island. If you are into fitness, you are truly spoilt, as the beach is close by.

It must also be taken into account when purchasing your family home that Sŵn-y-Môr is within easy reach of the independent shops, cafes, bars, and restaurants of Barry, including the Gallery and Streets Brasserie.

Barry also boasts good, local schools. The town's two secondary schools are undergoing a multi-million pound investment, merging the girls' and boys' schools, respectively.



"I KNEW HOW I
COULD BEAUTIFULLY
TRANSFORM THIS
HOUSE"





Sŵn-y-Môr is within easy reach of supermarkets, GP surgeries, and all the amenities a growing family would need. Since she purchased fabulous Sŵn-y-Môr, Faye has lavished care and attention on it, mixed in with a lot of love.

The house now has a beautiful flow which is tangible. From the welcoming porch, you step into the spacious hallway. The ground floor rooms flow naturally and effortlessly from this space.

To the left, step into an attractive lounge with a feature fireplace, wooden floor, and large bay window allowing light to flood in. It truly is the perfect space to while away cold, winter evenings or watch a movie with family and friends.

Off the hallway is an impressive family area. It begins with an open plan kitchen, breakfast bar and dining room which includes built-in appliances, and ample worktop and storage space. The decoration gently picks up the subtle seaside tones. There is plenty of room to place a large dining table. The French doors open into the enclosed and peaceful garden, where serenity abounds.

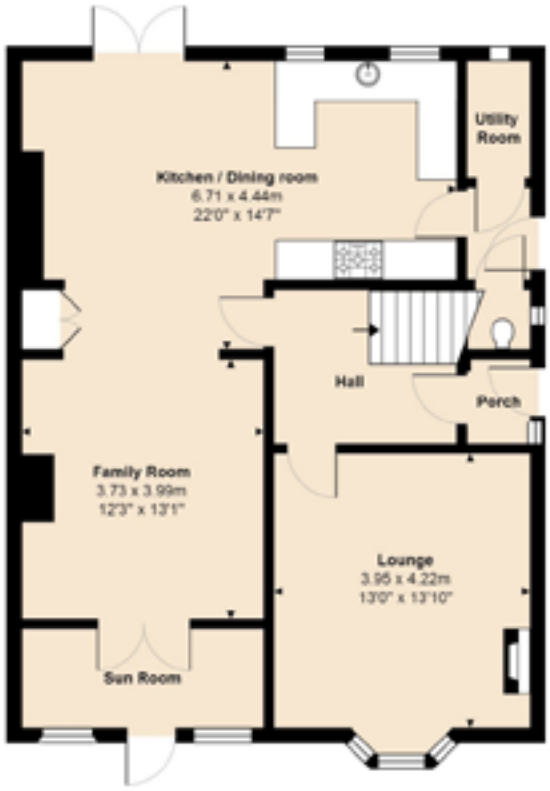


In the garden you will find a patio for barbecues and outdoor entertaining. The large lawns are big enough for children and pets to enjoy and benefit from mature trees and shrubs, shaded space where you can sit and relax or just to simply sit enjoying the surrounding view.

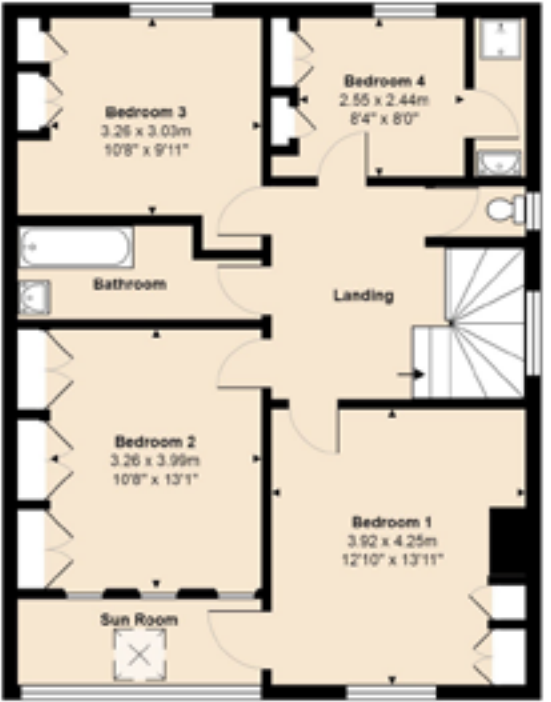
Stroll back into the house, and the kitchen and dining room leads naturally into a spacious family area and sun room, a gift of quiet space where you can work, read or plan the day's activities. There is also a useful utility room and a downstairs toilet, an absolute "must have" for an active and growing family.

Stroll upstairs to your master bedroom and sun room where the views are at their best. The sun room is your quiet space to make your own. Perhaps you will use it as an office or perhaps it will be your place to escape to enjoy watching the ships sail by from your private balcony. Enjoy watching the ships sail by from your private balcony. There are two more good sized bedrooms, both with views of the mature garden, and one which boasts an en-suite shower room. Perfect for teenagers who need their own space.

With Sŵn-y-Môr you get an excellent opportunity to buy a magical and much -loved home, which is full of light and positive energy. So introduce your family to this beautiful house and let your journey to a new life by the sea begin. 'SOLD!'



GROUND FLOOR



FIRST FLOOR

TOTAL AREA:
161.5M² | 1739 FT²

All Measurements are approximate and for display purposes only.



alexanders
Estate Agents

029 2060 6060
sales@alexanders.wales
www.alexanders.wales

